

Fall Newsletter  
2021

# Rocky Mountain Psychological Association

SALT LAKE CITY



<http://www.rockymountainpsych.com>

# Message from the President

Mary Pritchard, Ph.D.  
Boise State University

---

For 20+ years, RMPA has been my go-to conference. It's the conference I look forward to each year. I get to reconnect with friends from around the region, hear from top-notch speakers, and float my latest research ideas with others who share similar research interests. I always enjoy our varied location choices. 2022 will be no different. Finally, after 2 years, we are so excited to be back in person at RMPA 2022 in Salt Lake City at the Downtown Radisson!

These past two years have tried us in many ways. There has been substantial division in our country over the last two years, and this all centers around several significant changes. It is very difficult to see how we thrive as a nation if we continue to stay divided.



But, we cannot do this alone, nor should we do this divided. Thus, working together is the only way through this very difficult time in our country, and we hope that coming together at this year's conference is the beginning of that change.

To both recognize our individual and shared challenges and to celebrate our perseverance during challenging times, the 2022 RMPA conference is themed: **“Moving Forward Together in a Changing World”**. Our world *is* changing and we hope to be part of the solution for a better world. To that end, the 2022 conference features nationally recognized speakers, Karen Tao and Melba Vasquez, who will talk about confronting anti-racism and self-care for those who suffer from inequity. Our Distinguished Speaker, Rick Miller, will discuss how urbanization is undermining collectivism and family values for our migrant families. Our teaching keynote speaker, Karen Naufel, will discuss reducing risks for student researchers. Our Psi Chi invited speaker, Adriana Galvan, will talk about how neuroscience informs policy. We encourage you to get involved in all of these important conversations and welcome all submissions.

Although there will be serious conversations, it wouldn't be RMPA if there wasn't cause for celebration. It's our **90+2 anniversary!** We will celebrate the retirement of one of RMPA's longest-serving officers, Rick Miller, and Past President Charles Honts. We will also celebrate our wonderful students and faculty through our Student Research Awards, Distinguished Scholar Award, the Mentor Award, the Early Career Award, and the Distinguished Member Applications. We invite you to nominate your colleagues – see below for information on how to nominate your colleagues.

As I write this, covid-19 cases are at their highest in many states, and many hospitals are overrun and overwhelmed. We will keep a close eye on CDC guidelines and recommendations and restrictions at both State and local levels in Salt Lake City as it gets closer to the conference date. For your safety and those of your fellow conference attendees, we encourage you to get vaccinated and to wear a mask while indoors at the conference. Masks will be provided for you should need one. We are after all a science-based organization and we respect and honor the science behind the CDC's recommendations.



# We can't wait to see you in Salt Lake City!

# 2022 Annual Convention

Moving Forward Together in a Changing World

## Dates & Deadlines

**December 13<sup>th</sup>, 2021**  
Proposals due

**March 14<sup>th</sup>, 2022**  
Hotel Room Block Deadline

**March 11<sup>th</sup>, 2022**  
Early bird registration deadline

**April 7<sup>th</sup> – 9<sup>th</sup>, 2022**  
Convention Time!

<http://www.rockymountainpsych.com>

# COVID-19 Safety Protocol

- RMPA will follow CDC guidelines, recommendations, and restrictions at both State and local levels.
- We encourage you to get vaccinated and to wear a mask while indoors at the convention.
- Masks will be provided for you should you need one. Hand sanitizer will be available.
- Please check our website for the most up-to-date information.

<http://www.rockymountainpsych.com>

# 2022 Annual Convention

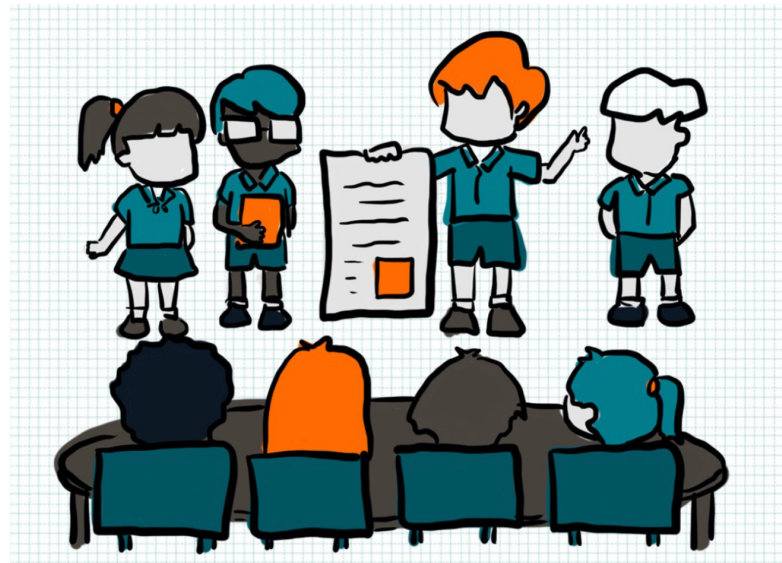
Moving Forward Together in a Changing World

## Proposal Information

- Submit proposals by Monday December 13<sup>th</sup>, 2021
- Proposal instructions and the submission site will be live on November 1<sup>st</sup>, 2021.
- <http://www.rockymountainpsych.com/new-page-1>

## Registration

- Registration for RMPA 2022 will open soon. Check the webpage for updates.
- <http://www.rockymountainpsych.com/registration>



Please email our program co-chairs with questions:  
James A. Kole [James.kole@unco.edu](mailto:James.kole@unco.edu)  
William Wozniak [Wozniakw@unk.edu](mailto:Wozniakw@unk.edu)

<http://www.rockymountainpsych.com>

# Radisson Hotel Salt Lake City Downtown

214 W. South Temple Salt Lake City, UT 84101,  
(801) 531-7500



## Hotel Information

---

The Hotel will honor reservations received by Monday, March 14, 2022.

Parking is \$5 per day for self-parking, \$5 per day for overnight and \$18 per day for valet parking.

**Attendees should CALL the Hotel and tell them you are making reservations for RMPA.**

# SALT LAKE CITY

## SALT LAKE OFFICIAL VISITORS GUIDE

Compiled by the Editors of  
**saltlake**  
MAGAZINE



Please email our Convention Managers with any questions prior to your travel.

Dr. Francie R. Murry: [Francie.Murry@unco.edu](mailto:Francie.Murry@unco.edu)

Dr. Meredith Minear: [Mminear2@uwyo.edu](mailto:Mminear2@uwyo.edu)

Thank you Francie & Meredith!



Click on the visitors guide to learn more about Salt Lake City.



# Featured Keynote Speakers

---

## Dr. Melba Vasquez

- Diversity Keynote Speaker
- Talk Title: The Ethics of Self-Care for Survivors of Inequity



---

## Dr. Richard Miller

- Distinguished Lecture
- Talk Title: How Urbanization Undermines a Collectivist Self Concept and Rural Values



---

## Dr. Adriana Galvan

- Psi Chi Invited Speaker
- Talk Title: The Adolescent Brain: Insights from Brain Imaging and Implications for Policy



# Featured Keynote Speakers

---

## Dr. Karen Tao

- Presidential Address
- Talk Title: Cultivating Cultural Fortitude and Confronting Antiracism in Clinical Practice and Beyond: A Multicultural Orientation Approach



---

## Dr. Charles Honts

- Past President's Address
- Talk Title: Deception and Deception Detection in 2022: The Mature Psychology Science That Few People Know



---

## Dr. Karen Naufel

- Teaching Conference Keynote
- Talk Title: Training Over Hazing: Reducing Risks to Student Researchers Builds Their Transferrable Skills



Dear RMPA Members,

I am excited to announce that the **2022 Wertheimer-Portenier Teaching Conference** will have an overarching theme focused on evidence-based principles of learning used in the classroom, online, or hybrid. Examples of principles of learning include the generation effect, desirable difficulties, pretraining, and asking deep questions. A list of 25 principles of learning can be found in Graesser (2009). Let's face it, regardless of your position, faculty everywhere had to adjust over the last year and a half and you most likely incorporated principles of learning in your pedagogy.

Whether you want to share what you did in the class for teaching or conducted research on a principle of learning, let's hear about it! For the keynote speaker, we are fortunate to have **Professor Karen Z. Naufel** from Georgia Southern University who was slated to give the keynote in 2020.

Professor Naufel is still very excited to be our keynote speaker and we are very excited as well! The title of her keynote is *Training Over Hazing: Reducing Risks to Student Researchers Builds Their Transferrable Skills*. By the way, one of the principles is transfer!

Sincerely,

Clayton L. Stephenson, [clstephe@usc.edu](mailto:clstephe@usc.edu)

Graesser, A. (2009). Inaugural editorial for *Journal of Educational Psychology*. *Journal of Educational Psychology*, 101(2), 259-261.  
<https://dx.doi.org/10.1037/a0014883>



---

**Date:** Thursday, April 7th, 2022

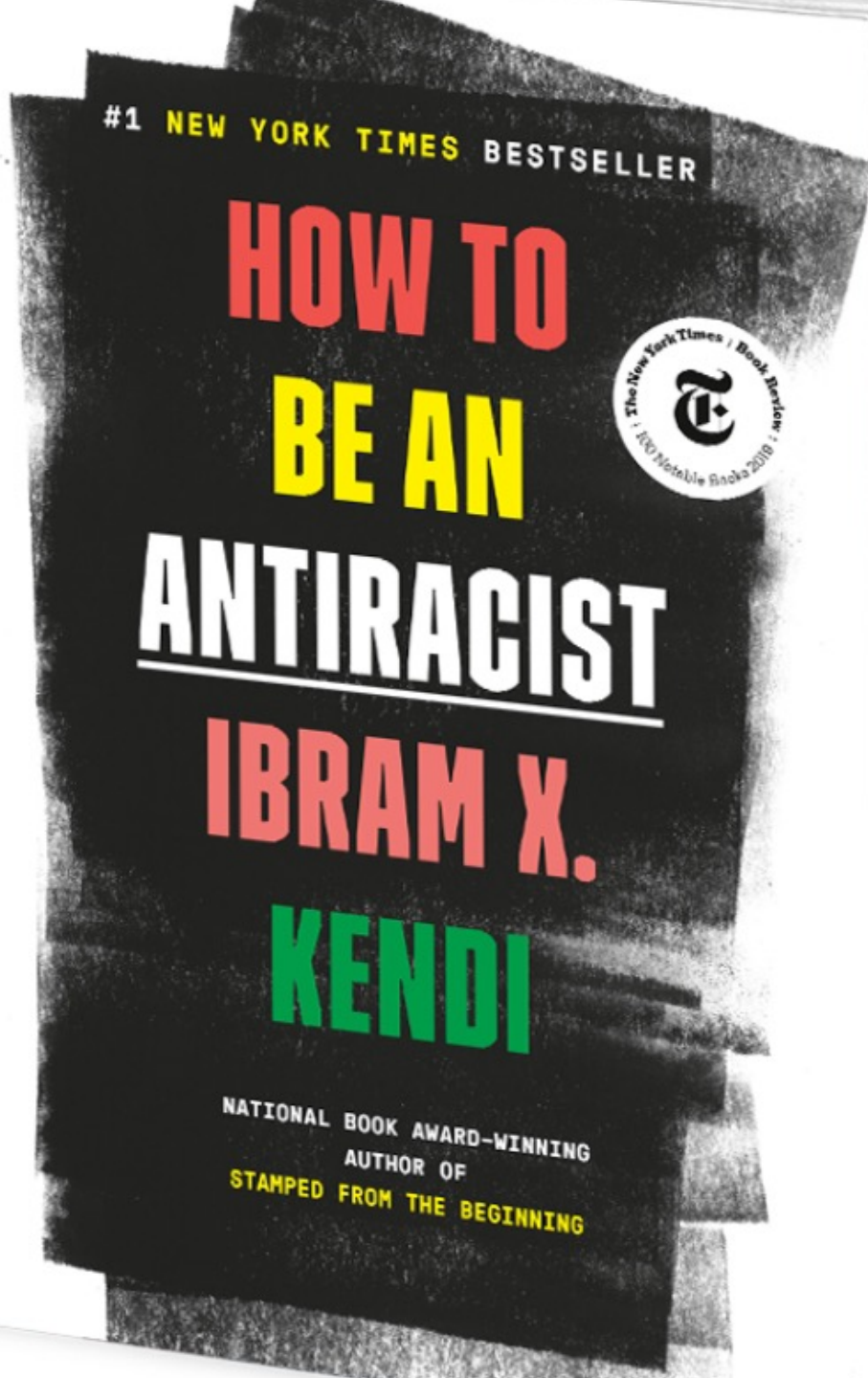
Noon: Teaching Take-Outs

1:00 - 2:00: Symposia and workshops

2:00 - 3:00: Keynote Address; Dr. Karen Naufel

3:00 - 5:00: Symposia and workshops

Read the "TEACHING TAKE-OUT CALL" online:  
<http://www.rockymountainpsych.com/teaching-take-out-call-for-proposals>



# How to Be an Antiracist Book Club

---

The Diversity Council will be hosting a book club to discuss Ibram X. Kendi's impactful book. We would love for you to read the book over the next couple of months and be ready to share your thoughts when you come to the convention.

<https://www.ibramxkendi.com/how-to-be-an-antiracist>



**APA**  
**APPROVED**  
**SPONSOR**

## **Continuing Education Credits**

RMPA will once again team up with Seattle Pacific University to offer Continuing Education/Professional Development opportunities for some of our speakers and workshops. You may earn as many of the available credits as you wish, for a small \$55.00 Continuing Education Fee added to your annual dues and conference registration.

Please consider proposing a nuts-and-bolts clinical workshop or an empirically informed discussion on clinical ethics session. If you have other ideas about a type of activity that would be of benefit to clinical professionals, please also submit your proposal!

Read more: <http://www.rockymountainpsych.com/ce-credits>

**IF YOU HAVE QUESTIONS, PLEASE CONTACT DR. STEVE BARNEY: [BARNEY@SUU.EDU](mailto:BARNEY@SUU.EDU)**

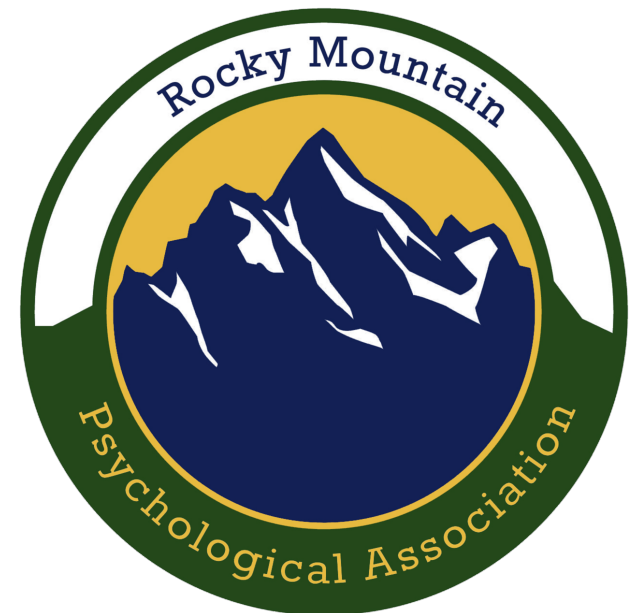
# Award Nominations

Please consider nominating yourself or an outstanding colleague for a RMPA award:

[RMPA EARLY CAREER AWARD](#)

[RMPA MENTOR AWARD](#)

[DISTINGUISHED SCHOLAR AWARD](#)



# PSI CHI News

Psi Chi is excited to be part of RMPA 2022! The Psi Chi Distinguished Lecturer this year is Dr. Adriana Galvan from the UCLA [Developmental Neuroscience Lab](#). Dr. Galvan's talk is titled: The Adolescent Brain: Insights from Brain Imaging and Implications for Policy.

The Psi Chi service activity and conference programming is open to all students, both graduate and undergraduate, regardless of current Psi Chi membership. We look forward to interacting with you in SLC, UT!

Contact Dr. Jennifer Grewe with questions:  
[jennifer.grewe@usu.edu](mailto:jennifer.grewe@usu.edu)



## Service Activity

Psi Chi organizes an annual service activity at RMPA on Thursday morning from 8:00-noon. More details will be forthcoming!

## Travel Grants

Psi Chi members are encouraged to offset travel expenses to RMPA by applying for a [Regional Travel Grant](#).

## Awards

Graduate and undergraduate Psi Chi members are eligible to apply for the Regional Research Award (\$400). When you submit your proposal to RMPA you will have the opportunity to indicate whether you would like to be considered. More information can be found [here](#).

# PSI CHI News

Psi Chi chapters are encouraged to examine the **history of psychology** at their college or university and to **submit a poster** about their institutional history to a special poster session scheduled for

the 2022 RMPA. These historical research posters can increase knowledge about psychological history within and across universities in the Rocky Mountain region, provide a venue for teacher-scholars to work with teams of excited students, and provide students with opportunities to earn authorship on these convention presentations.

Please contact Doug Woody ([william.woody@unco.edu](mailto:william.woody@unco.edu)) with any questions and review additional details by going to <http://www.rockymountainpsych.com/psi-chi-at-rmpa>



**PSI CHI**  
THE INTERNATIONAL  
HONOR SOCIETY  
IN PSYCHOLOGY



# Treasurer's report

---

The Association is in good financial standing, despite the challenging situation we've faced during the COVID-19 pandemic and having to cancel the 2020 and 2021 annual meetings. RMPA currently has just over \$80,000 in total assets. While this represents a net loss over the past year, the organization remains in a decent position, given our financial obligations and anticipated revenues in the foreseeable future.

The 2022 conference in Salt Lake City, if well-attended will help to increase our financial stability, but if not well-attended it could result in an overall asset reduction.

Ann Catherine Rumble: [Ann.Rumble@nau.edu](mailto:Ann.Rumble@nau.edu)



Please help welcome RMPA's  
new treasurer, Dr. Ann  
Catherine Rumble

# Candidates for Election



---

## President Elect

The President presides at all Association and Executive Committee meetings, submits nominations for Chairpersons of standing committees is an ex-officio member of all committees, is responsible for the selection of the RMPA Distinguished Lecturer for the Annual Convention, is invited to deliver an address at the Annual Convention and appoints ad hoc committees as needed with the advice and consent of the Executive Committee.

The President-Elect assumes the duties of the President in the President's absence.

**Nominate yourself or a  
colleague**

## Diversity Chair

The RMPA Diversity Council's mission is to promote multicultural education, training, research and social justice in a manner that assists psychologists in maintaining and enhancing their ethical conduct with diverse groups.

### RMPA is also looking for:

- **Program Committee Members**
- **Membership Engagement Coordinator**
- **Diversity Council Members.**

# RMPA Executive Committee



**MARY PRITCHARD**

President



**CHERYL SANDERS**

President Elect



**NORA DUNBAR**

Past President



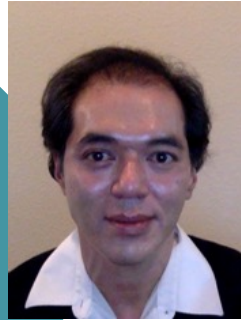
**BETHANY FLECK**

Secretary



**ANN CATHERINE RUMBLE**

Treasurer



**JAMES KOLE**

Program Co-Chair



**BILL WOZNIAK**

Program Co-Chair



**NIKKI JONES**

Diversity Council Chair



**WILLIAM DOUGLAS WOODY**

Historian



**NANCY KARLIN**

Convention  
Coordinator



**CLAYTON STEPHENSON**

Teaching  
Conference  
Coordinator